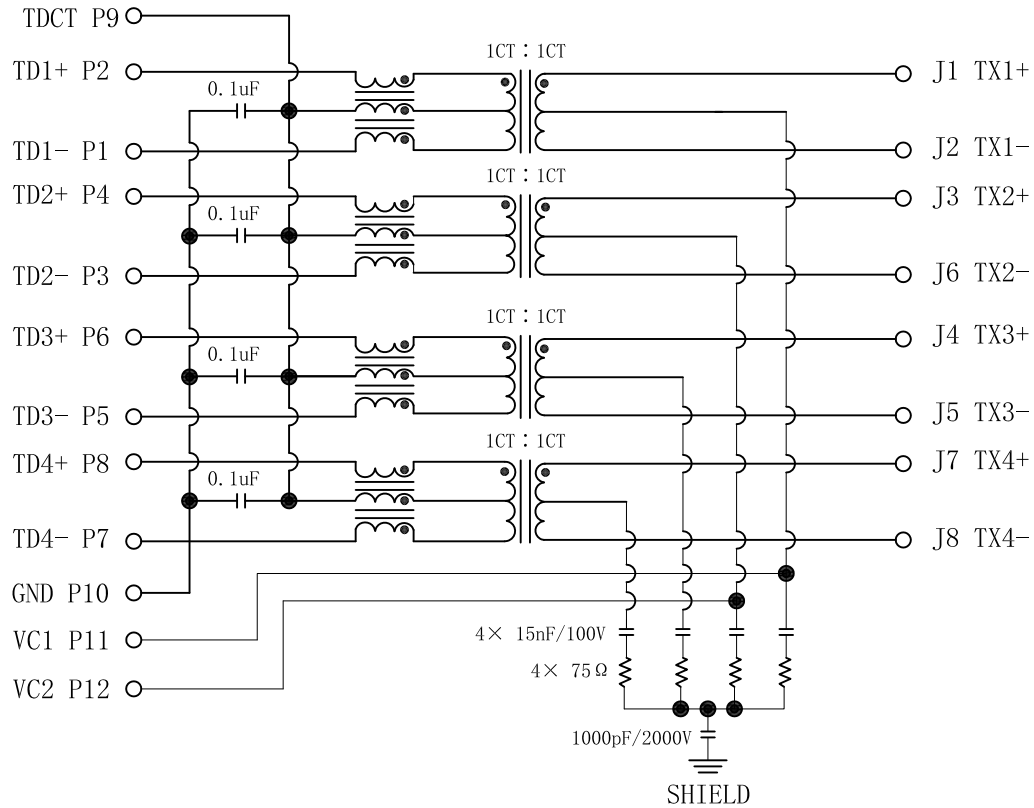


Schematic:

REV.	ECN NO.	DESCRIPTION	DATE	APPD
A	REL		2019/05/06	

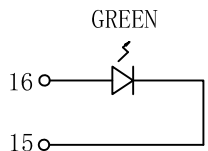
PC BOARD CONNECTIONS



RJ45 CONNECTOR

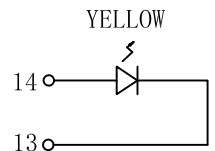
Electrical Specification @25°C

- Turns Ratio ($\pm 2\%$):
Pri : Sec = 1CT : 1CT
- Inductance: 350uH Min
@0.1V, 0.1MHz, 11mA DC Bias
- Insertion Loss:
1-100MHz: -1.0dB Max
- Return Loss (dB Min, @100 Ω):
1-30MHz: -18 30-60MHz: -16
60-80MHz: -12 80-100MHz: -10
- Crosstalk (dB Min):
1-100MHz: -30
- Common Mode Rejection (dB Min):
1-100MHz: -30
- Balanced DC Line Current:
720mA Max @57VDC Continuous.
1.2A Max @57VDC For 200 Milliseconds.
- Hipot: 1500Vrms
- Operating Temperature: -40°C ~ +85°C.



LEFT LED

LED POLARITY		COLOR
PIN 16	PIN 15	
+	-	GREEN



RIGHT LED

LED POLARITY		COLOR
PIN 14	PIN 13	
+	-	YELLOW

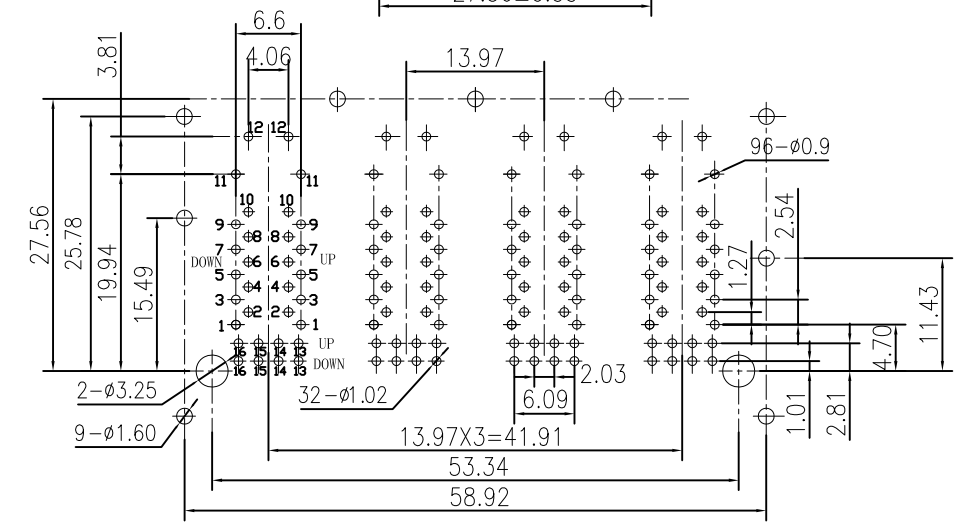
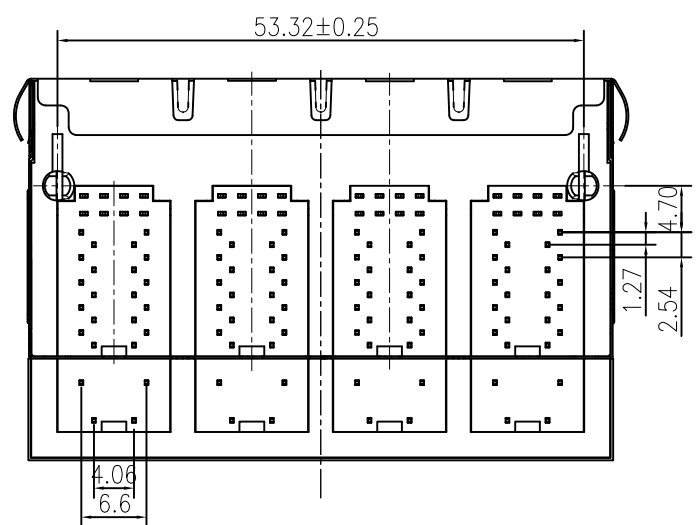
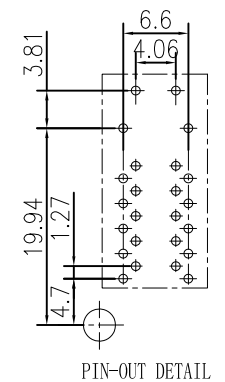
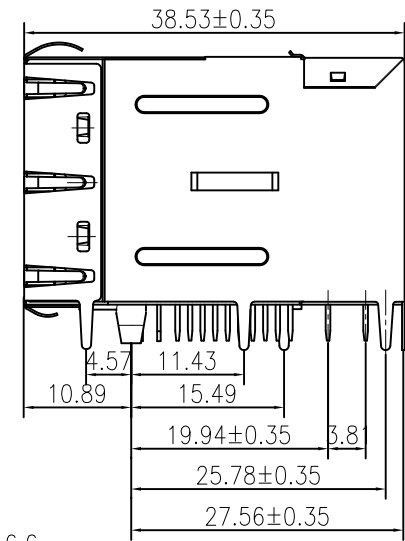
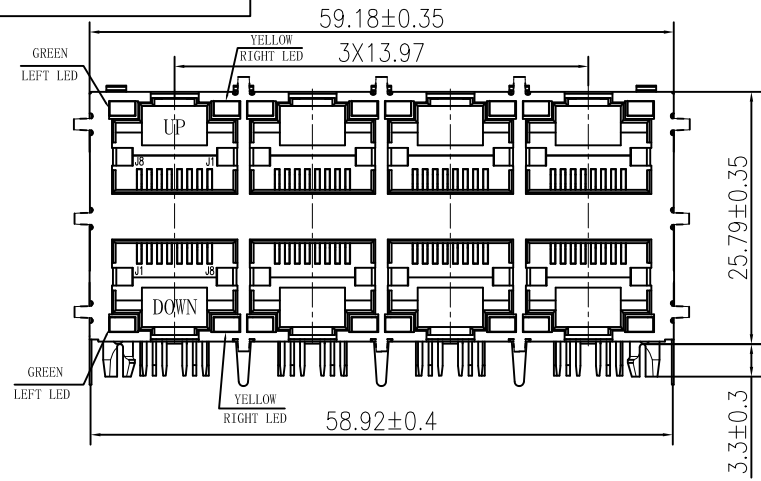


Emitting Color	λ p(nm)	VF@IF=20mA	IR @VR=5V
GREEN	565	1.8~2.6V	20 μ A max
YELLOW	585	1.8~2.6V	20 μ A max

X:X	± 0.30	APPD:	LINK-PP INT'L TECHNOLOGY CO., LIMITED
X:XX	± 0.25	CHKD:	
X:XXX	± 0.05	DR: TOM	TITLE: RJ45 .Transformer. 1000 Base-T W/LED. 2x4 Port For PoE+ Application
ANGLES	$\pm 1^\circ$	UNIT: mm	PART NO.: LPJG47041AHNL
	SCALE: 2/1	SHEET: 1/2	REV: A
			DWG NO.: LP19050601

Mechanical :

REV.	ECN NO.	DESCRIPTION	DATE	APPD
A	REL		2019/05/06	



NOTES:
 1. Designed to support application, such as SOHO (ADSL modems), LAN-on-Motherboard (LOM), hub and Switches.
 2. Meets IEEE 802.3at specification
 3. Connector Materials:
 Housing: Thermoplastic UL94V-0
 Contact/Shield: Copper alloy
 Shield plating: Nickel
 Contact plating: Gold 6 micro-inches min. In contact area.
 4. Wave solder tip temperature: 265°C Max, 5 Sec.
 5. UL Certification: File Number E484635.



X:X	± 0.30	APPD:	LINK-PP INT'L TECHNOLOGY CO., LIMITED
X:XX	± 0.25	CHKD:	
X:XXX	± 0.05	DR: TOM	TITLE: RJ45 .Transformer. 1000 Base-T W/LED. 2x4 Port For PoE+ Application
ANGLES	$\pm 1^\circ$	UNIT: mm	PART NO.: LPJG47041AHNL
	SCALE: 2/1	SHEET: 2/2	REV: A DWG NO.: LP19050601