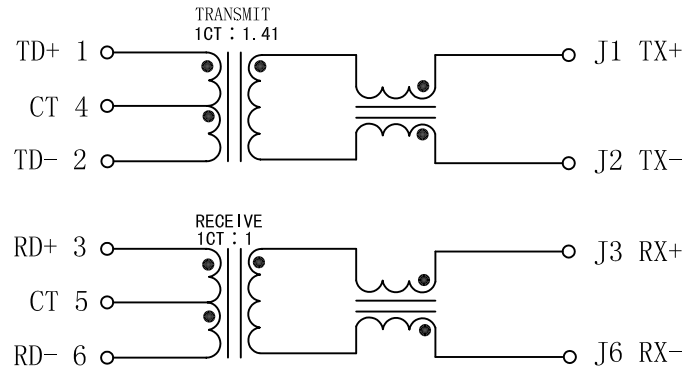


Schematic:

REV.	ECN NO.	DESCRIPTION	DATE	APPD
A	REL		2011/10/07	

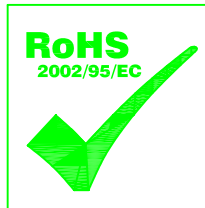
PCB SIDE TO PHY



CABLE SIDE

ELECTRICAL SPECIFICATIONS @25°C

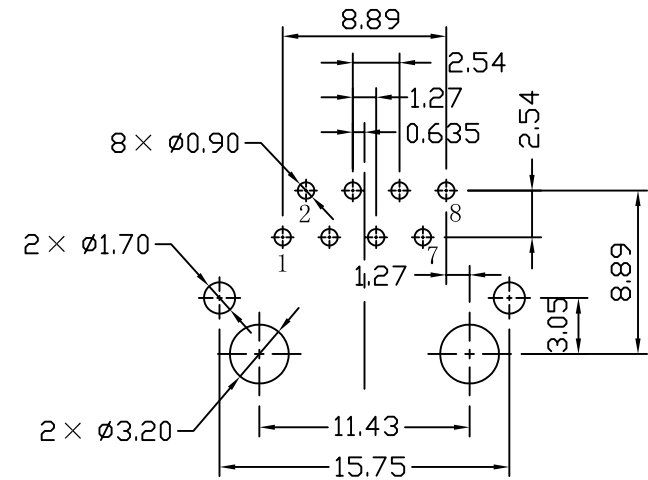
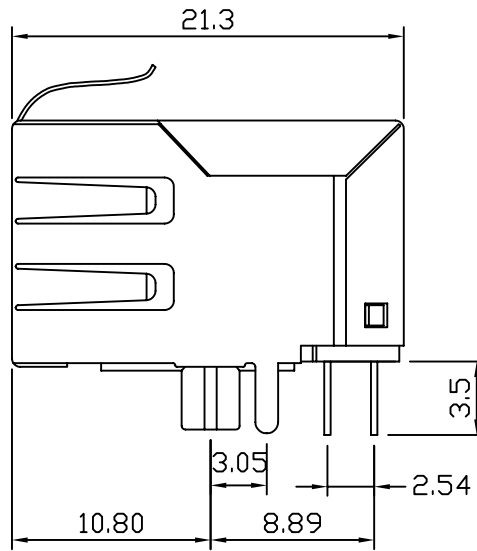
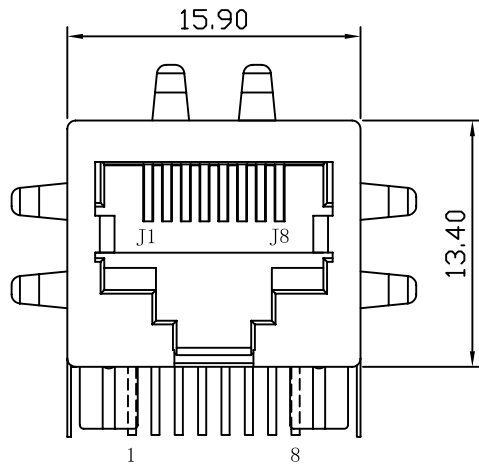
- Turn Ratio($\pm 2\%$):
TX=1CT : 1.41 RX=1CT : 1
- OCL: 140uH MIN @100KHz/0.2Vrms
- LL: 0.4uH MAX
- Cww: 15pF MAX
- Hipot:1500Vrms
- Operating Temperature: 0°C TO 70°C



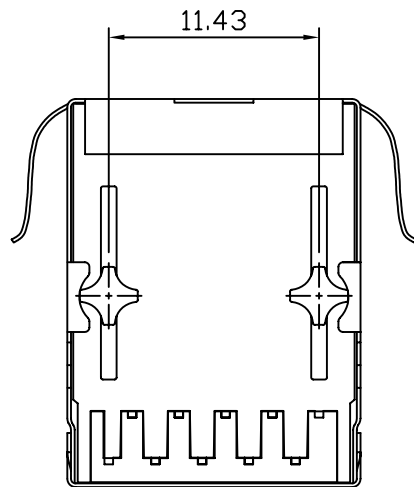
X:X ±0.25	APPD:	LINK-PP INT'L TECHNOLOGY CO., LIMITED
X:XX ±0.20	CHKD:	
X:XXX ±0.05	DR: TOM	
ANGLES $\pm 1^\circ$	UNIT: mm	TITLE: RJ45 Connector with 10 Base-T Integrated Magnetics
		PART NO. : LPJ0194CNL
	SCALE: 2/1	SHEET: 1/2
	REV: A	DWG NO. : LP11100703

Mechanical:

REV.	ECN NO.	DESCRIPTION	DATE	APPD
A	REL		2011/10/07	



SUGGESTED PCB LAYOUT (TOP VIEW)



NOTES:

1. Designed to support application, such as SOHO (ADSL modems), LAN-on-Motherboard (LOM), hub and Switches.
2. Meets IEEE 802.3 specification
3. Connector Materials:
 Housing: Thermoplastic UL94V-0
 Contact/Shield: Copper alloy
 Shield plating: Nickel
 Contact plating: Gold 6 micro-inches min. In contact area.
4. Wave solder tip temperature: 265°C Max
 Wave solder tip temperature time: 5 Sec Max.



X:X ±0.25	APPD:	LINK-PP INT'L TECHNOLOGY CO., LIMITED
X:XX ±0.20	CHKD:	
X:XXX ±0.05	DR: TOM	TITLE: RJ45 Connector with 10 Base-T Integrated Magnetics
ANGLES ±1°	UNIT: mm	PART NO.: LPJ0194CNL
	SCALE: 2/1	SHEET: 2/2
	REV: A	DWG NO.: LP11100703