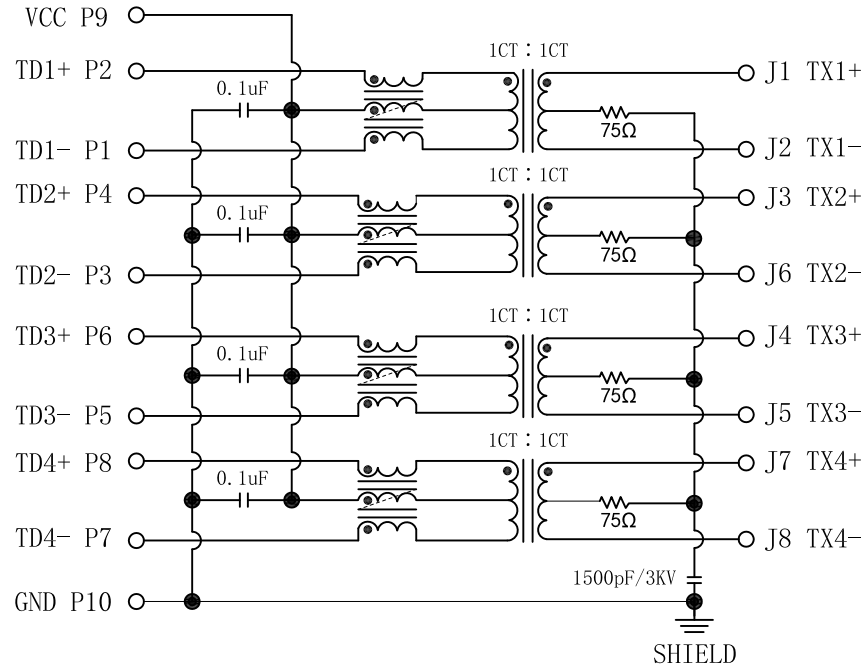


Schematic:

REV.	ECN NO.	DESCRIPTION	DATE	APPD
A	REL		2015/06/18	

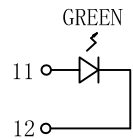
PC BOARD CONNECTIONS



RJ45 CONNECTOR

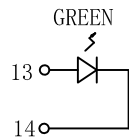
Electrical Specifications @25°C

- OCL: 350uH Min
@100KHz, 0.1Vrms, 8mA DC Bias.
- Turns Ratio ($\pm 2\%$): 1CT : 1CT
- Insertion Loss (dB Max):
0.1-1MHz: -1.1 1-65MHz: -0.5
65-100MHz: -0.8 100-125MHz: -1.2
- Return Loss (dB Min @100 $\Omega \pm 15\%$):
0.5-40MHz: -18
40-100MHz: -12+20LOG(f/80MHz)
- Crosstalk:
0.1-100MHz: -30dB Min
- CM to CM Rej:
0.1-100MHz: -30dB Min
- CM to DM Rej:
0.1-100MHz: -35dB Min
- Hipot: 1500Vac 60s or 2250Vdc 60s.
- Operating Temperature: -40°C ~ +85°C.



LEFT LED

LED POLARITY		COLOR
PIN 11	PIN 12	
+	-	GREEN



RIGHT LED

LED POLARITY		COLOR
PIN 13	PIN 14	
+	-	GREEN

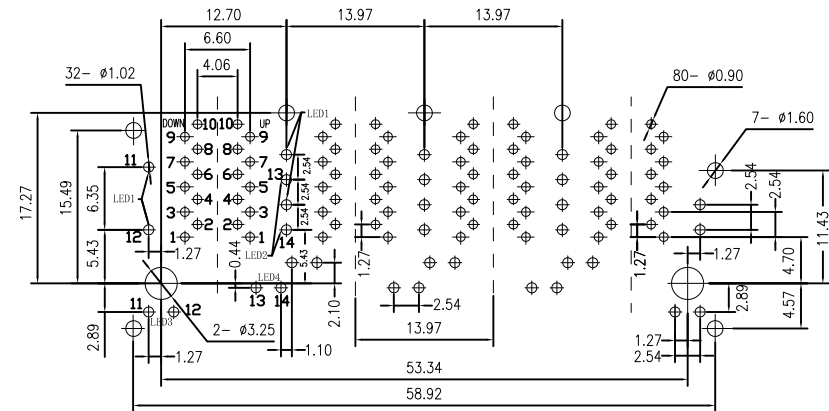
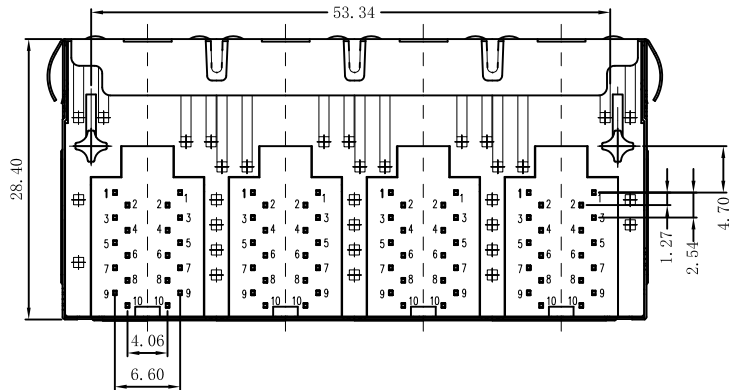
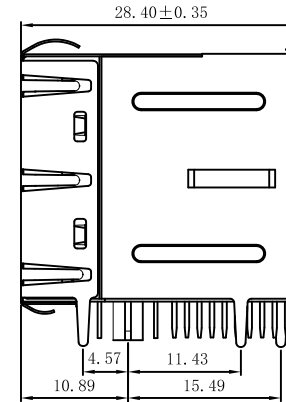
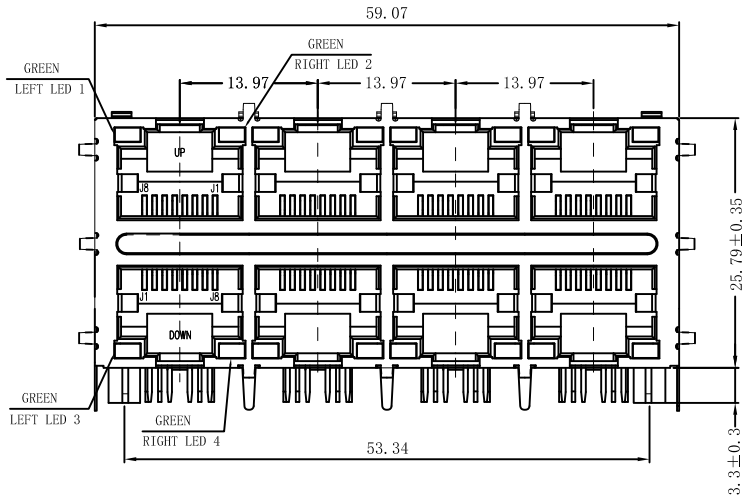


Emitting Color	λ p(nm)	VF@IF=20mA	IR @VR=5V
GREEN	565	1.8~2.6V	10 μ A max

X:X	± 0.30	APPD:	LINK-PP INT'L TECHNOLOGY CO., LIMITED
X:XX	± 0.25	CHKD:	
X:XXX	± 0.05	DR: TOM	TITLE: RJ45 .Transformer. 1000 Base-T W/LED. 2x4 Port
ANGLES	$\pm 1^\circ$	UNIT: mm	PART NO.: LPJG47090AFNL
	SCALE: 2/1	SHEET: 1/2	REV: A DWG NO.: LP15061817

Mechanical :

REV.	ECN NO.	DESCRIPTION	DATE	APPD
A	REL		2015/06/18	



SUGGESTED PCB LAYOUT <TOP VIEW>

NOTES:

1. Designed to support application, such as SOHO (ADSL modems), LAN-on-Motherboard (LOM), hub and Switches.
2. Meets IEEE 802.3 specification
3. Connector Materials:
 Housing: Thermoplastic UL94V-0
 Contact/Shield: Copper alloy
 Shield plating: Nickel
 Contact plating: Gold 6 micro-inches min. In contact area.
4. Wave solder tip temperature: 265°C Max, 5 Sec.
5. UL Certification: File Number E484635.



X:X ±0.30	APPD:	LINK-PP INT'L TECHNOLOGY CO., LIMITED
X:XX ±0.25	CHKD:	
X:XXX ±0.05	DR: TOM	TITLE: RJ45 . Transformer. 1000 Base-T W/LED. 2×4 Port
ANGLES ±1°	UNIT: mm	PART NO. : LPJG47090AFNL
	SCALE: 2/1	SHEET: 2/2
	REV: A	DWG NO. : LP15061817