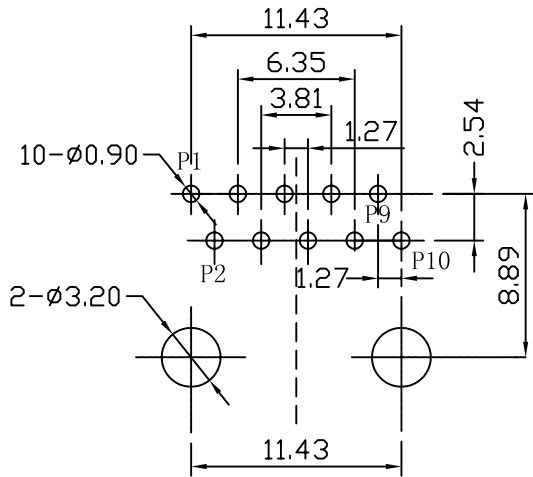
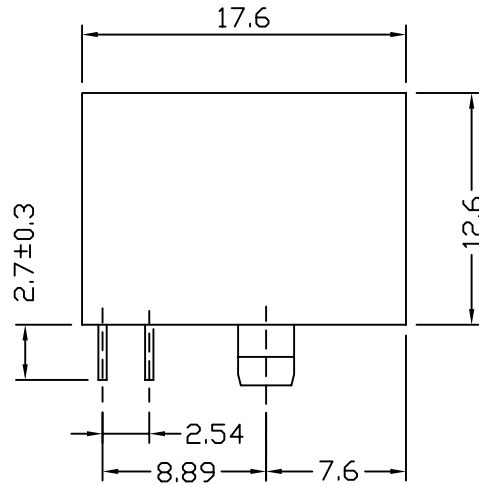
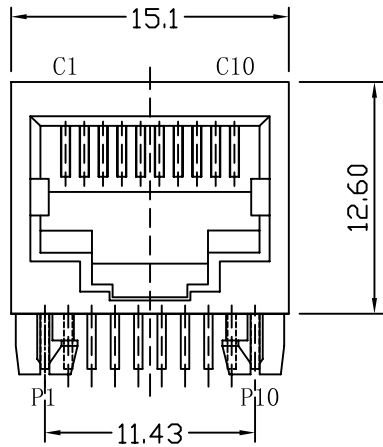
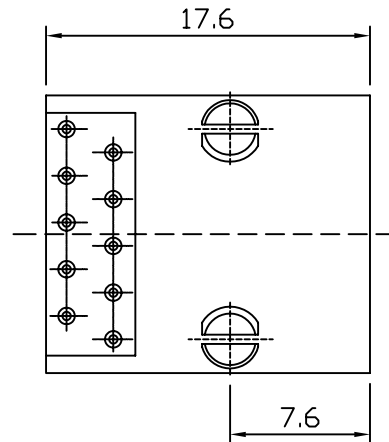


Mechanical:

REV.	ECN NO.	DESCRIPTION	DATE	APPD
A	REL		2011/12/29	



PC Board Layout (Top View)



- PCB JACK Specification
1. Insulation Resistance: 500MΩ Min @ 500 VDC
 2. Withstanding Voltage: AC1000V 50Hz or 60Hz 1min.
 3. Durability: 750 Mating Cycles Min.
 4. Gold Plating:
(Gold Flash; 1.5; 3; 6; 15; 30; 50)u" inch
 5. (1) Storage: -40°C to +85°C
(2) Operation: -40°C to +85°C
(3) Wave solder temperature: 230°C to 250°C, 5~10 Sec.



X:X ±0.25	APPD:	LINK-PP INT'L TECHNOLOGY CO., LIMITED		
X:XX ±0.10	CHKD:	TITLE: RJ45 1×1 CONNECTOR (10P 10C)		
X:XXX ±0.05	DR: TOM	PART NO.: LPJE901NNL		
ANGLES ±1°	UNIT: mm			
	SCALE: 2/1	SHEET: 1/1	REV: A	DWG NO.: LP11122901