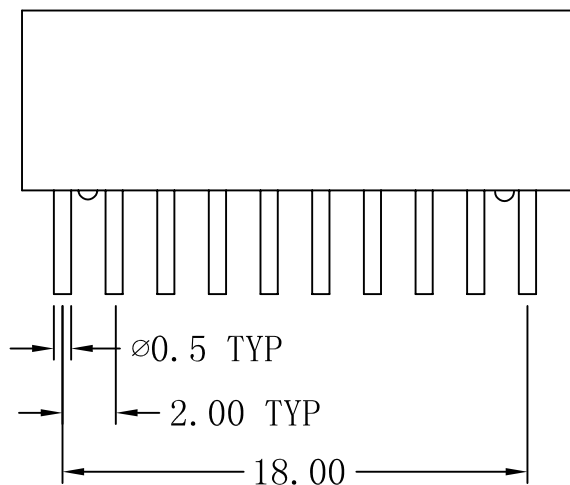
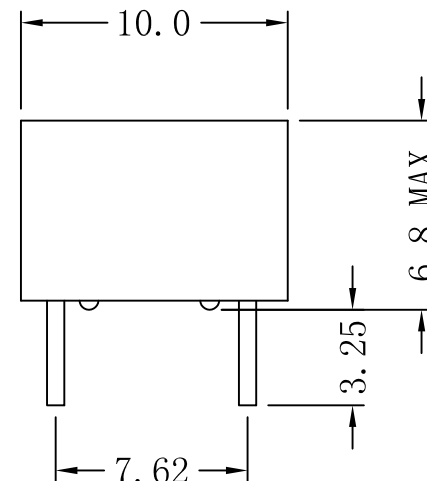
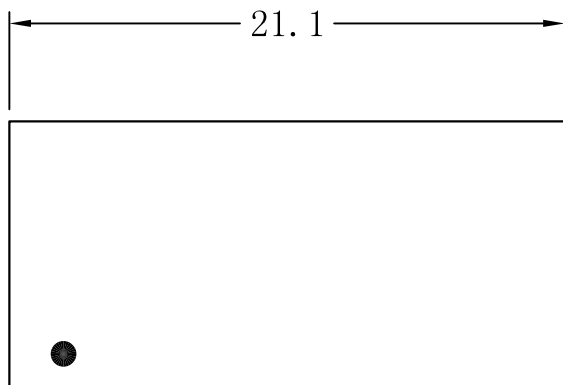


Mechanical:

REV.	ECN NO.	DESCRIPTION	DATE	APPD
A	REL		2010/04/02	



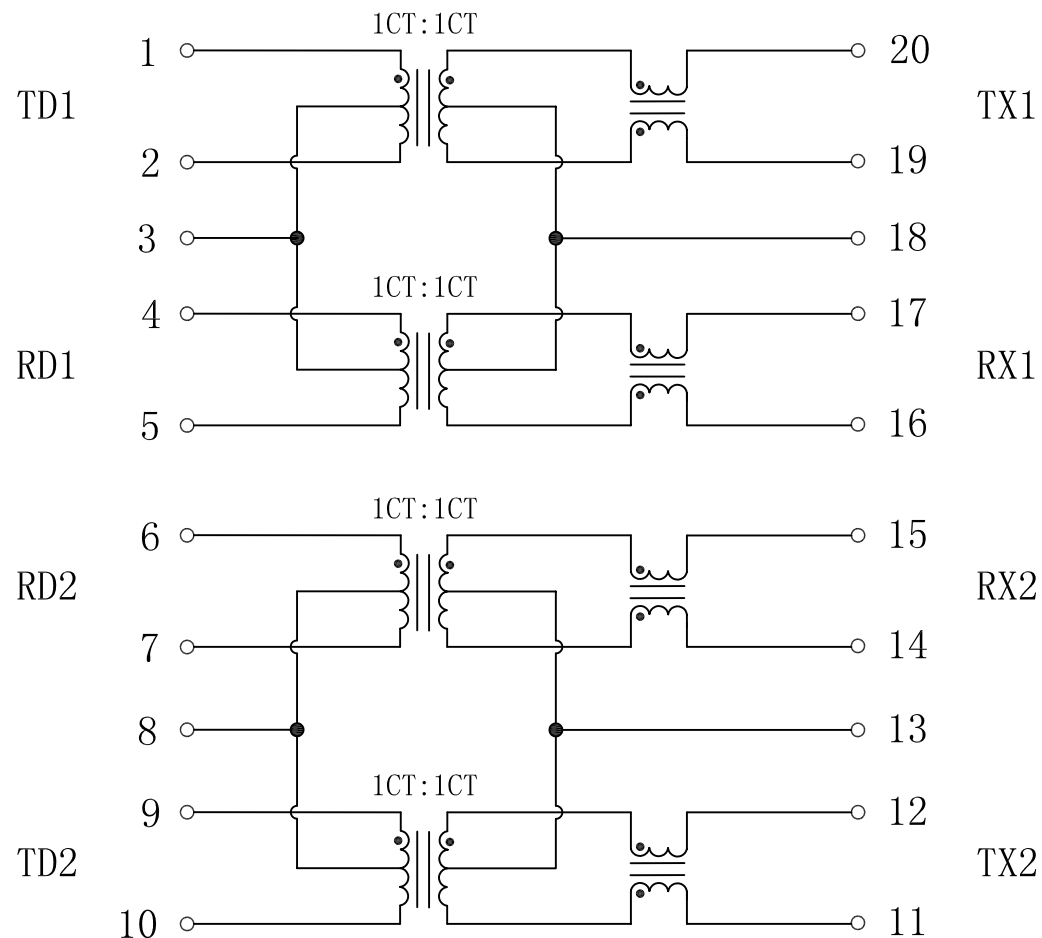
NOTES:

1. Designed to support application, such as SOHO (ADSL modems), LAN-on-Motherboard (LOM), hub and Switches.
2. With various Turns Ratios.
3. RoHS "NL" peak solder rating 235°C.

X:X	± 0.20	APPD:	LINK-PP INT'L TECHNOLOGY CO., LIMITED	
X:XX	± 0.10	CHKD:		
X:XXX	± 0.05	DR: TOM	TITLE: 10/100Base-TX Dual Port Transformer Modules	
ANGLES	$\pm 1^\circ$	UNIT: mm	PART NO.: LP42070PNL	
	SCALE: 2/1	SHEET: 1/2	REV: A	DWG NO.: LP10040209

Schematic:

REV.	ECN NO.	DESCRIPTION	DATE	APPD
A	REL		2010/04/02	



Electrical Specifications @25°C

- Turns Ratio($\pm 5\%$):
TX=1CT:1CT RX=1CT:1CT
- OCL(100KHz, 0.2V, 8mA DC Bias):
350uH Min
- Polarity:
1-20, 4-17, 6-15, 9-12 In-Phase
- Insertion Loss:
-1.1dB Max @ 0.5-100MHz
- Return Loss:
-18dB Min @ 0.5-30MHz
-18-20log(f/30)dB Min @ 30.1-60MHz
-12dB Min @ 60.1-80MHz
- CMRR:
-30dB Min @ 0.5-100MHz
- Crosstalk:
-35dB Min @ 0.5-40MHz
-33-20log(f/50)dB Min @ 40.1-100MHz
- Isolation Voltage:1500VAC
- Operating Temperature:0~70°C



X:X	± 0.20	APPD:	LINK-PP INT'L TECHNOLOGY CO., LIMITED	
X:XX	± 0.10	CHKD:	TITLE: 10/100Base-TX Dual Port Transformer Modules	
X:XXX	± 0.05	DR: TOM	PART NO.: LP42070PNL	
ANGLES	$\pm 1^\circ$	UNIT: mm		
	SCALE: 2/1	SHEET: 2/2	REV: A	DWG NO.: LP10040209