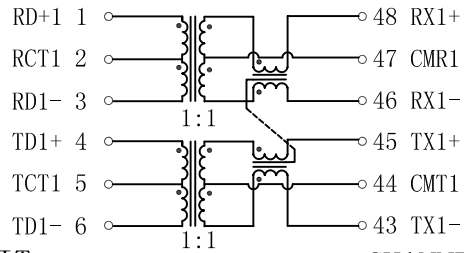


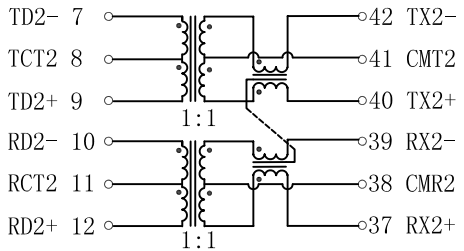
Schematic:

REV.	ECN NO.	DESCRIPTION	DATE	APPD
A	REL		2010/11/22	

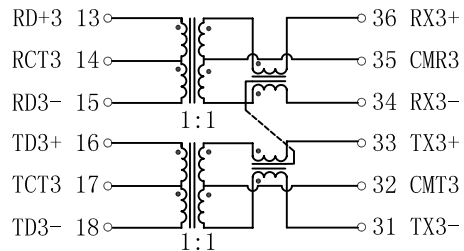
RECEIVE



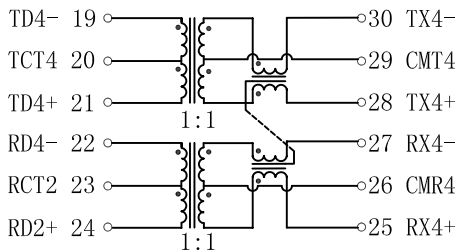
TRANSMIT CHANNEL 1



RECEIVE CHANNEL 2



TRANSMIT CHANNEL 3



RECEIVE CHANNEL 4

CHIP SIDE

MEDIA SIDE

Electrical Specifications: @25°C

1. Insertion Loss:

1-100MHz: -1.2dB Max

2. Return Loss: (dB Min @100 Ω)

1-30MHz: -16; 40MHz: -14

50MHz: -13; 60-80MHz: -12

3. Crosstalk:

30MHz: -45dB Min

60MHz: -40dB Min

100MHz: -35dB Min

4. DCMR:

30MHz: -43dB Min

60MHz: -37dB Min

100MHz: -33dB Min

5. Isolation Voltage: 1500Vrms Min.

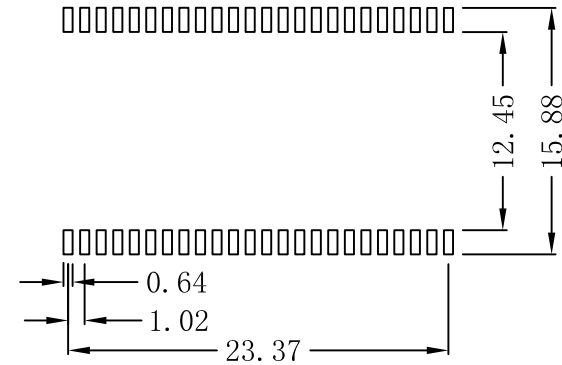
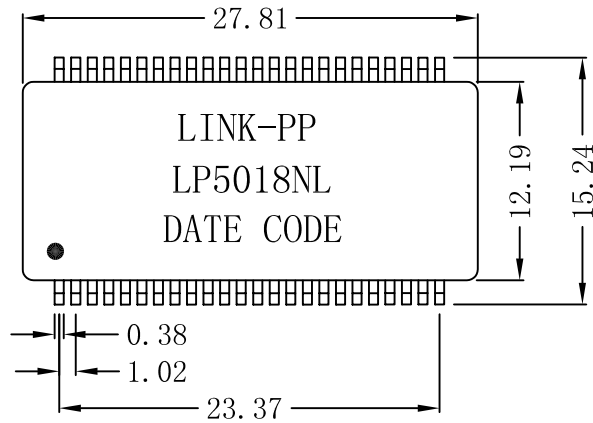
6. PoE applications current capability: 600mA.



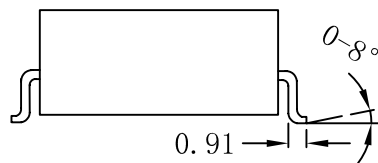
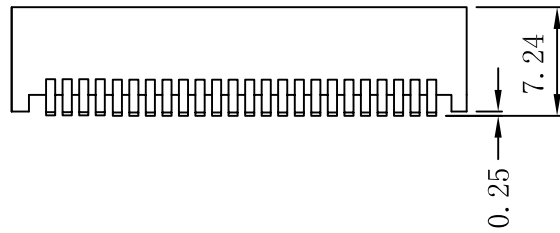
X:X	±0.20	APPD:	LINK-PP INT'L TECHNOLOGY CO., LIMITED	
X:XX	±0.10	CHKD:		
X:XXX	±0.05	DR: TOM	TITLE: Power over Ethernet (PoE) Magnetics 10/100Base-Tx VoIP Magnetics Modules	
ANGLES	±1°	UNIT: mm	PART NO.: LP5018NL	
	SCALE: 2/1	SHEET: 1/2	REV: A	DWG NO.: LP10112206

Mechanical:

REV.	ECN NO.	DESCRIPTION	DATE	APPD
A	REL		2010/11/22	



SUGGESTED PAD LAYOUT



NOTES:

1. Designed for IP phone or switch applications
2. IEEE 802.3af/ADSI X3.263 Compliant performance
3. Inductance (100KHz/0.1V@8mA): 350uH Min
4. RoHS "NL" peak solder rating 245°C
5. Operating Temperature: 0°C ~ +70°C.



X:X	±0.20	APPD:	LINK-PP INT'L TECHNOLOGY CO., LIMITED	
X:XX	±0.10	CHKD:		
X:XXX	±0.05	DR: TOM	TITLE: Power over Ethernet (PoE) Magnetics 10/100Base-Tx VoIP Magnetics Modules	
ANGLES	±1°	UNIT: mm	PART NO.: LP5018NL	
	SCALE: 2/1	SHEET: 2/2	REV: A	DWG NO.: LP10112206