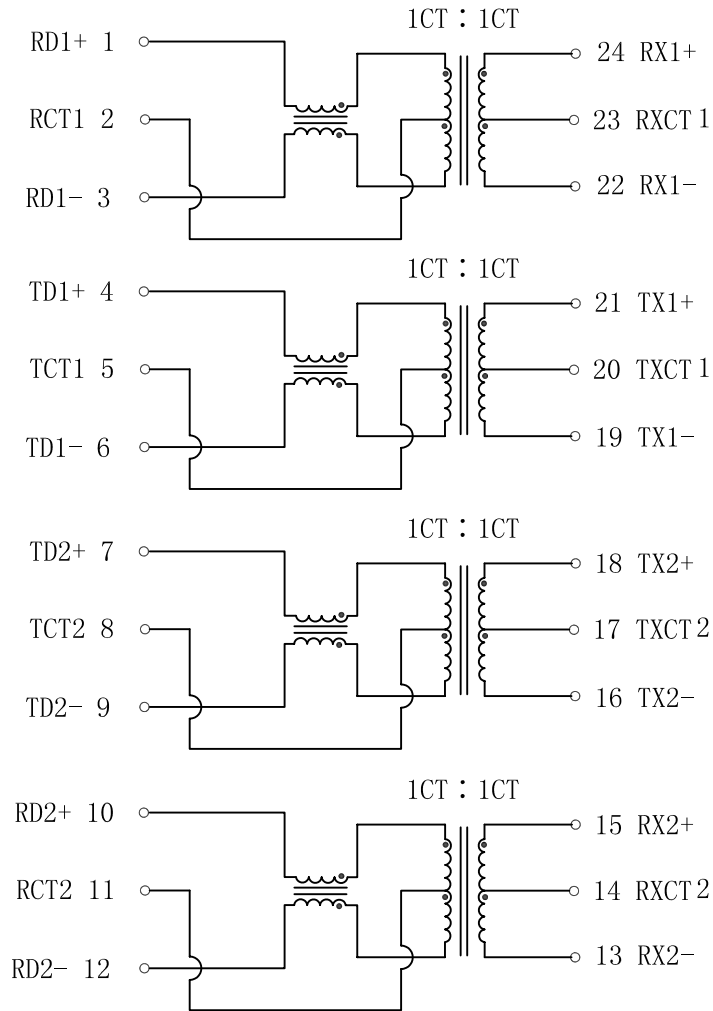


# Schematic:

REV.	ECN NO.	DESCRIPTION	DATE	APPD
A	REL		2012/09/18	

MEDIA SIDE



CHIP SIDE

## Electrical Specifications @25°C

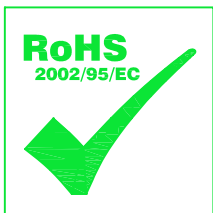
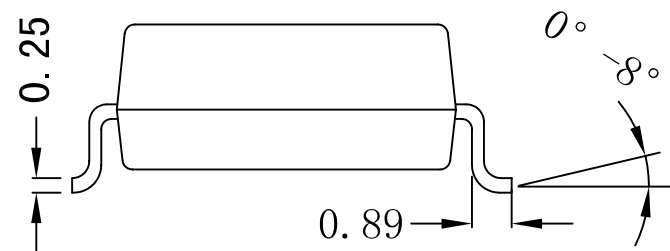
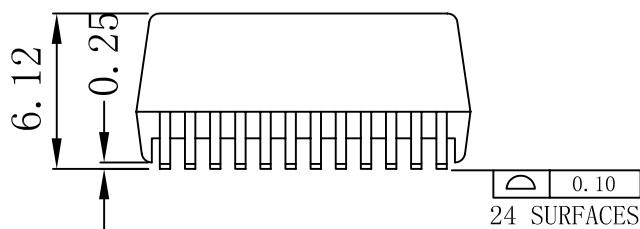
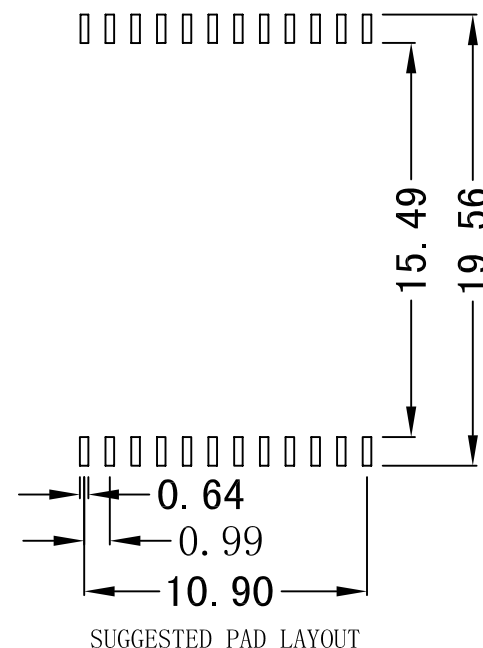
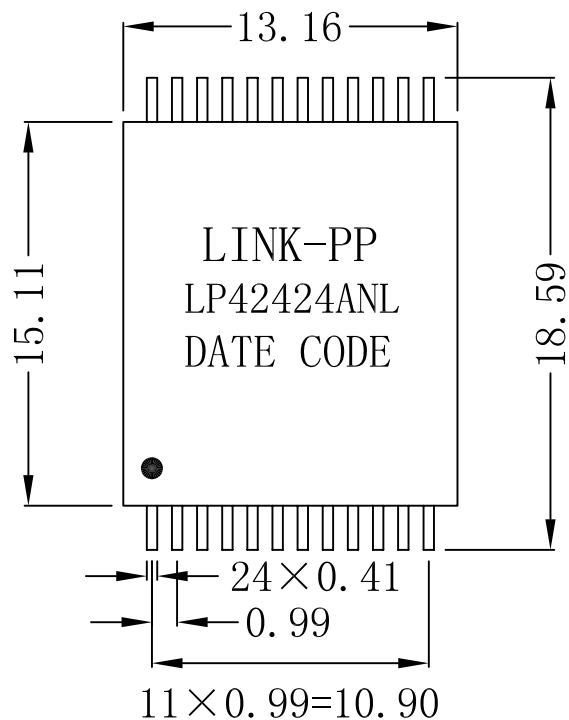
- ISOLATION: 1500 Vrms
- INSERTION LOSS:
  - 1.2dB Max @0.1MHz
  - 1.4dB Max @100MHz
- RETURN LOSS:
  - 16dB Min @30MHz
  - 10dB Min @60MHz
  - 10dB Min @80MHz
- Crosstalk:
  - 45dB Min @30MHz
  - 40dB Min @60MHz
  - 33dB Min @100MHz
- Operating Temperature: -40°C ~ +85°C



X:X	±0.20	APPD:	LINK-PP INT'L TECHNOLOGY CO., LIMITED	
X:XX	±0.10	CHKD:	TITLE: 10/100 Base-TX VoIP Magnetic Modules & PoE	
X:XXX	±0.05	DR: TOM	PART NO.: LP42424ANL	
ANGLES	±1°	UNIT: mm		
	SCALE: 2/1	SHEET: 1/2	REV: A	DWG NO.: LP12091803

**Mechanical:**

REV.	ECN NO.	DESCRIPTION	DATE	APPD
A	REL		2012/09/18	



**NOTES:**

1. Designed to support application, such as SOHO (ADSL modems), LAN-on-Motherboard (LOM), hub and Switches.
2. This part is compliant to IEEE802.3af, Power over Ethernet (PoE) standard.
3. With various Turns Ratios.
4. 350uH min OCL with 8mA bias current.
5. RoHS "NL" peak solder rating 245°C.

X:X	±0.20	APPD:	LINK-PP INT'L TECHNOLOGY CO., LIMITED	
X:XX	±0.10	CHKD:	TITLE: 10/100 Base-TX VoIP Magnetic Modules & PoE	
X:XXX	±0.05	DR: TOM	PART NO.: LP42424ANL	
ANGLES	±1°	UNIT: mm	DWG NO.: LP120911803	
SCALE: 1/1		SHEET: 2/2		REV: A