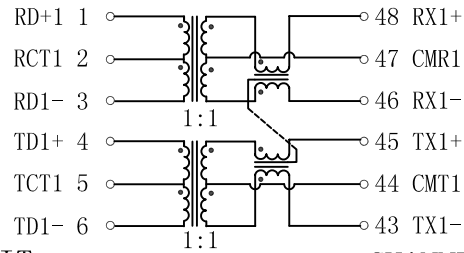


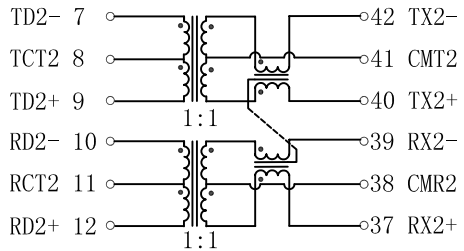
Schematic:

REV.	ECN NO.	DESCRIPTION	DATE	APPD
A	REL		2010/11/22	

RECEIVE

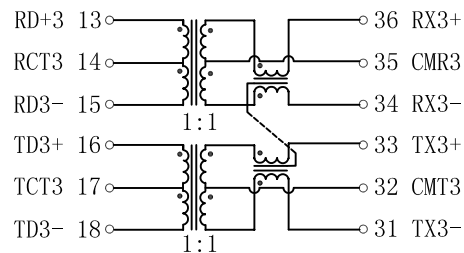


TRANSMIT

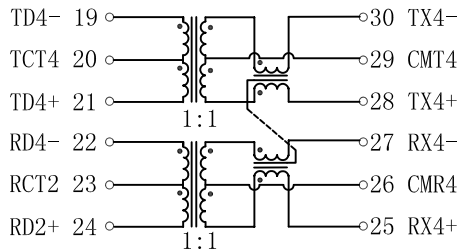


CHANNEL 1

RECEIVE



TRANSMIT



CHANNEL 3

RECEIVE



CHANNEL 4

CHIP SIDE

MEDIA SIDE

Electrical Specifications: @25°C

1. Insertion Loss:

1-100MHz:-1.2dB Max

2. Return Loss:(dB Min @100Ω)

1-30MHz:-16; 40MHz:-14

50MHz:-13; 60-80MHz:-12

3. Crosstalk:

30MHz:-45dB Min

60MHz:-40dB Min

100MHz:-35dB Min

4. DCMR:

30MHz:-43dB Min

60MHz:-37dB Min

100MHz:-33dB Min

5. Isolation Voltage:1500Vrms Min.

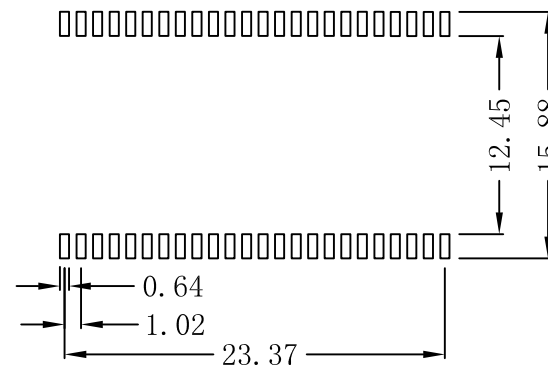
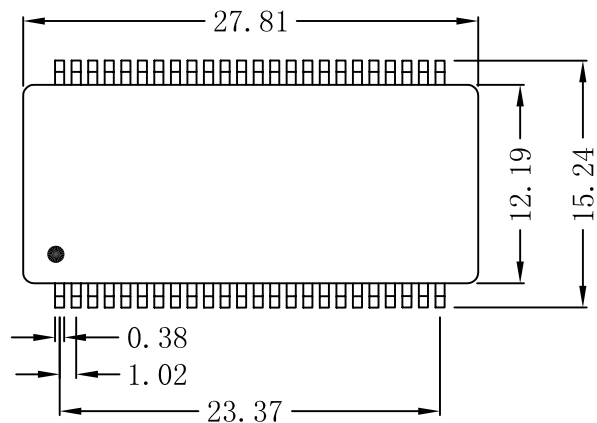
6. PoE applications current capability: 600mA.



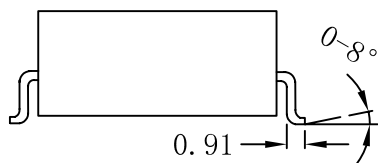
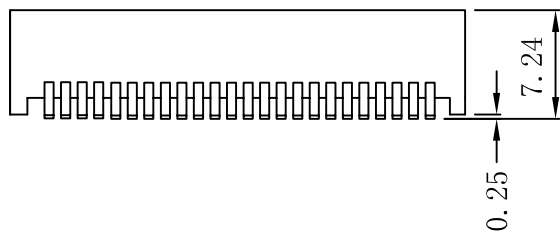
X:X	±0.20	APPD:	LINK-PP INT'L TECHNOLOGY CO., LIMITED	
X:XX	±0.10	CHKD:		
X:XXX	±0.05	DR: TOM	Title: Power over Ethernet (PoE) Magnetics 10/100Base-Tx VoIP Magnetics Modules	
ANGLES	±1°	UNIT: mm	PART NO. : LP5018ANL	
	SCALE: 2/1	SHEET: 2/2	REV: A	DWG NO. : TRC10112202

Mechanical :

REV.	ECN NO.	DESCRIPTION	DATE	APPD
A	REL		2010/11/22	



SUGGESTED PAD LAYOUT



NOTES:

1. Designed for IP phone or switch applications
2. IEEE 802.3af/ADSI X3.263 Compliant performance
3. Inductance(100KHz/0.1V@8mA): 350uH Min
4. RoHS "NL" peak solder rating 245°C
5. Operating Temperature:-40°C ~+85°C



X:X	±0.20	APPD:	LINK-PP INT'L TECHNOLOGY CO., LIMITED	
X:XX	±0.10	CHKD:		
X:XXX	±0.05	DR: TOM	Title: Power over Ethernet(PoE)Magnetics 10/100Base-Tx VoIP Magnetics Modules	
ANGLES	±1°	UNIT: mm	PART NO. : LP5018ANL	
	SCALE: 2/1	SHEET: 1/2	REV: A	DWG NO. : TRC10112202