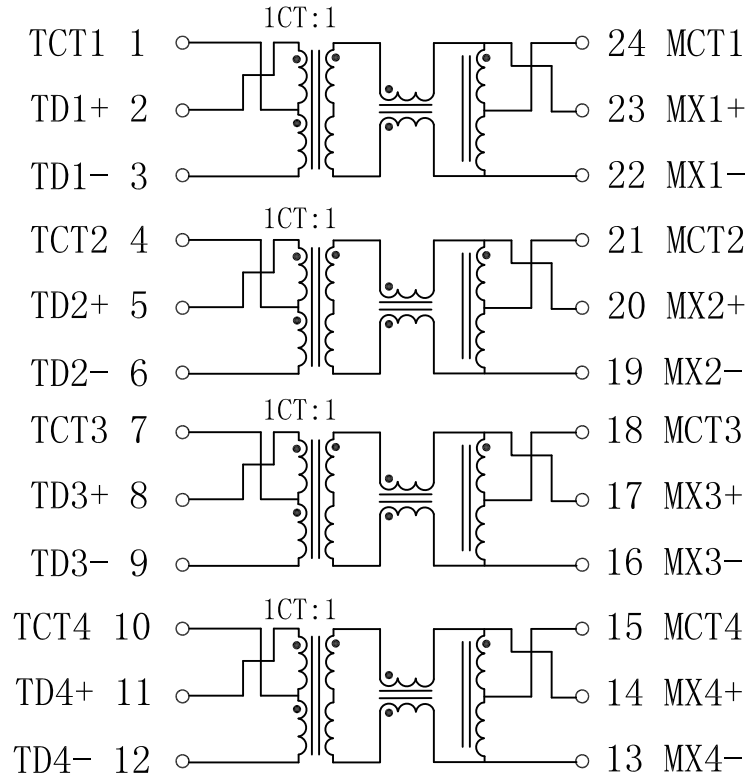


Schematic:

| REV. | ECN NO. | DESCRIPTION | DATE | APPD |
|------|---------|-------------|------------|------|
| A | REL | | 2010/11/11 | |



Electrical Specifications @25°C

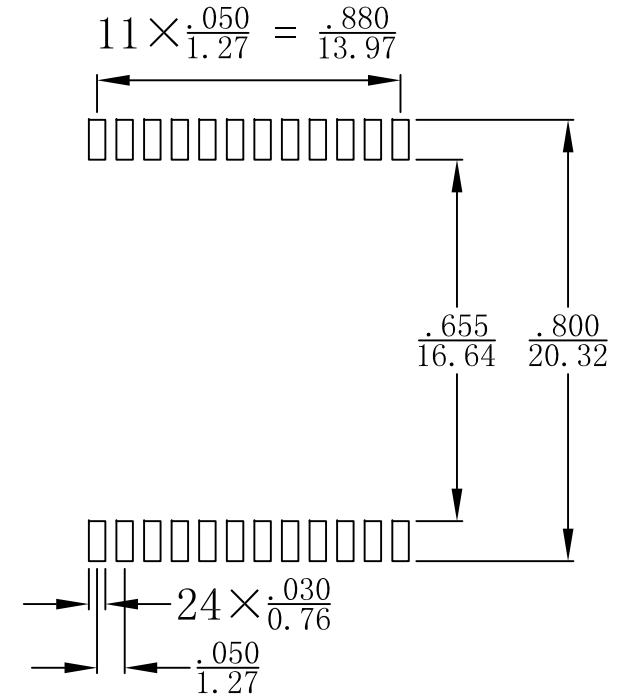
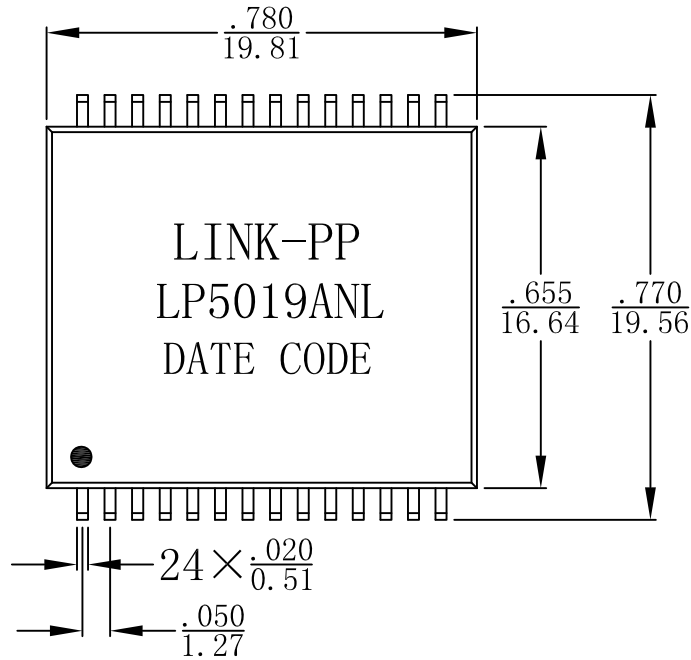
- Turns Ratio: 1CT : 1
- Inductance (100KHz, 100mV, 8mA) :
350uH MIN
- Insertion Loss:
1-100MHz:-1.0dB Max
- Return Loss (dB Min) :
1-40MHz:-18
40-100MHz:-12+20*LOG10 (f/80)
- Crosstalk (dB Min) :
30-100MHz:-55+24*LOG10 (f/10)
- Differential to Common Mode Rejection:
30-100MHz:-43+22*LOG10 (f/30) dB Min
- Hipot: 1500Vrms Min
- Operating Temperature: -40°C ~ +85°C.



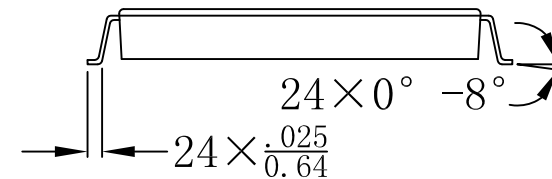
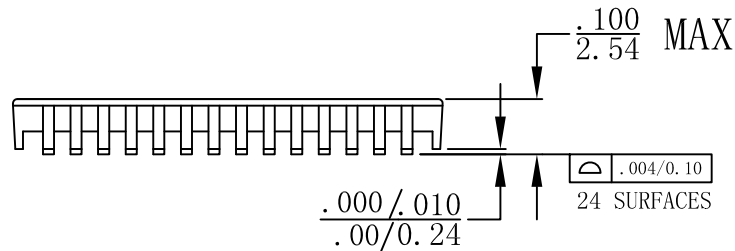
| | | | | |
|------------|-----------------|---|--|--|
| X:X | APPD: | LINK-PP INT'L TECHNOLOGY CO., LIMITED | | |
| X:XX | CHKD: | TITLE: 1000Base-T Low Profile Magnetics Module | | |
| X:XXX | DR: TOM | PART NO. : LP5019ANL | | |
| ANGLES ±1° | UNIT: Inches/mm | SCALE: 2/1 SHEET: 1/2 REV: A DWG NO. : LP10111112 | | |

Mechanical:

| REV. | ECN NO. | DESCRIPTION | DATE | APPD |
|------|---------|-------------|------------|------|
| A | REL | | 2010/11/11 | |



SUGGESTED LAND PATTERN



NOTES:

1. Designed to support application, such as SOHO (ADSL modems), LAN-on-Motherboard (LOM), hub and Switches.
2. With various Turns Ratios.
3. 350uH min OCL with 8mA bias current.
4. RoHS "NL" peak solder rating 260°C ± 5°C.



Unless otherwise specified, all tolerances are $\pm \frac{.010}{0.25}$

| | | | | |
|------------|-----------------|--|--------|--|
| X:X | APPD: | LINK-PP INT'L TECHNOLOGY CO., LIMITED | | |
| X:XX | CHKD: | TITLE: 1000Base-T Low Profile Magnetics Module | | |
| X:XXX | DR: TOM | PART NO.: LP5019ANL | | |
| ANGLES ±1° | UNIT: Inches/mm | DWG NO.: LP10111112 | | |
| | SCALE: 2/1 | SHEET: 2/2 | REV: A | |