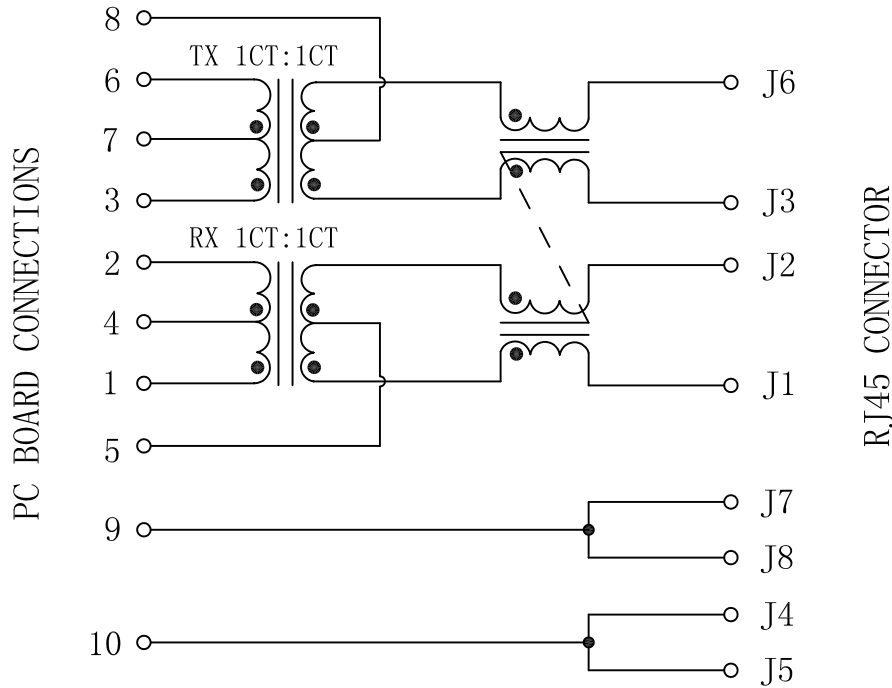
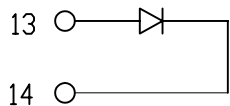


Schematic:

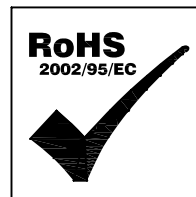
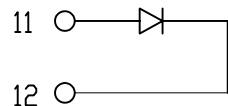
REV.	ECN NO.	DESCRIPTION	DATE	APPD
A	REL		2010/07/09	



YELLOW/LEFT LED



GREEN/RIGHT LED



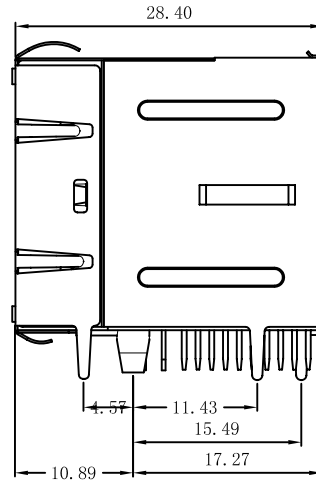
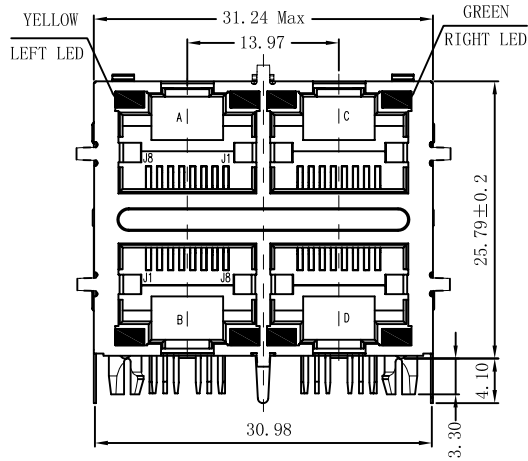
Electrical Specifications @25°C

- Inductance: 350uH Min
@100KHz 100mV 8mADC Bias
- Turns Ratio ($\pm 3\%$) :
TX=1CT:1CT RX=1CT:1CT
- Insertion Loss:
1-100MHz:-1.2dB Max
- Return Loss(dB Min):
1-30MHz:-16 40MHz:-14
50MHz:-13 60-80MHz:-12
- Crosstalk(dB Min):
30MHz:-43 60MHz:-37
100MHz:-33
- Differential to common mode rejection:
30MHz:-50dB Min
60MHz:-43dB Min
100MHz:-35dB Min
- Isolation Voltage: 1500Vrms
- Operating Temperature Range: -40°C ~+85°C.

X:X	± 0.20	APPD:	LINK-PP INT'L TECHNOLOGY CO., LIMITED
X:XX	± 0.10	CHKD:	
X:XXX	± 0.05	DR: TOM	Title: RJ45 .Transformer. 10/100 Base-T W/LED. 2x2 & PoE
ANGLES	$\pm 1^\circ$	UNIT: mm	PART NO.: LPJ27401ADNL
	SCALE: 2/1	SHEET: 1/2	REV: A DWG NO.: LP11070901

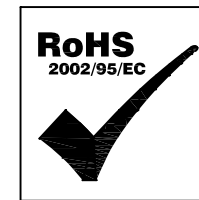
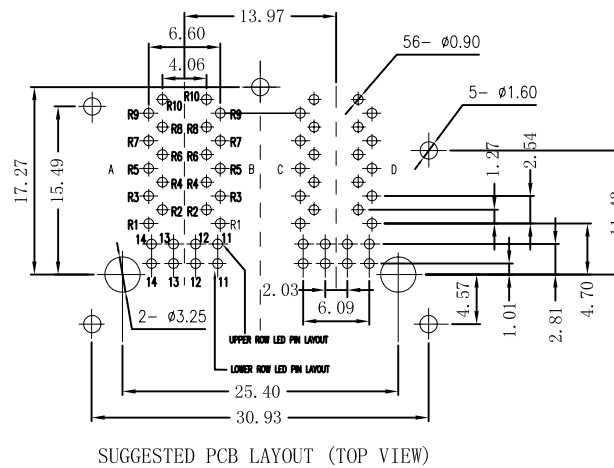
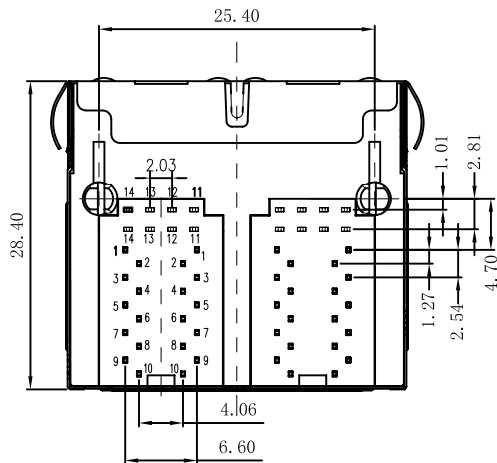
Mechanical :

REV.	ECN NO.	DESCRIPTION	DATE	APPD
A	REL		2010/07/09	



NOTES:

1. Designed to support application, such as SOHO (ADSL modems), LAN-on-Motherboard (LOM), hub and Switches.
2. Meets IEEE 802.3 specification
3. Connector Materials:
Housing: Thermoplastic UL94V-0
Contact/Shield: Copper alloy
Shield plating: Nickel
Contact plating: Gold 6 micro-inches min. In contact area.
4. Wave solder tip temperature: 265°C Max
Wave solder tip temperature time: 5 Sec Max



X:X	±0.20	APPD:	LINK-PP INT'L TECHNOLOGY CO., LIMITED
X:XX	±0.10	CHKD:	
X:XXX	±0.05	DR: TOM	Title: RJ45 .Transformer.10/100 Base-T W/LED.2×2 & PoE
ANGLES	±1°	UNIT: mm	PART NO.: LPJ27401ADNL
	SCALE: 2/1	SHEET: 2/2	REV: A DWG NO.: LP11070901